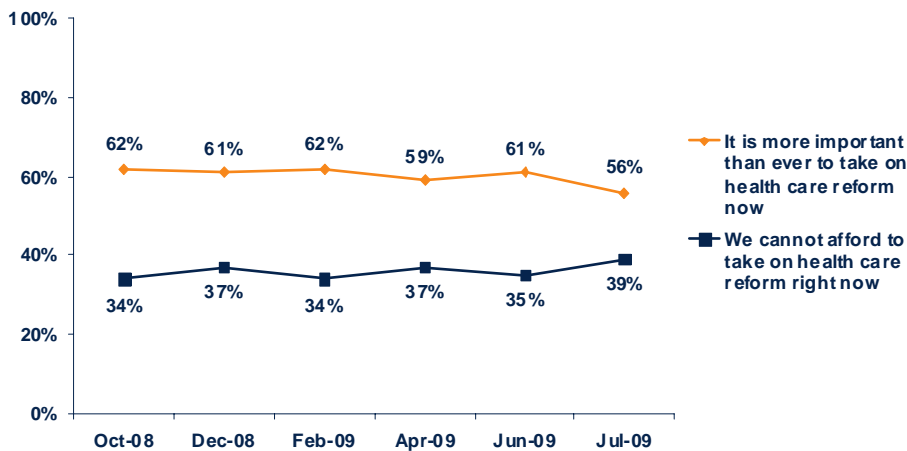


## JULY SURVEY FINDS CONTINUING SUPPORT FOR HEALTH CARE REFORM

**Urgency of reform.** As has been true since last October, the majority of the public (56 percent) says that health care reform is more important now than ever before. Four in ten, in contrast, say we cannot afford to take on reform now given the nation's economic troubles. There remain stark partisan splits on this issue, with seven in ten Democrats backing reform now and six in ten Republicans taking the opposite view. Political independents tilt the balance by backing reform now 54 percent to 42 percent who say we can't afford it.

### Health Care Reform... Is Now the Right Time?

Which comes closer to describing your own views? Given the serious economic problems facing the country...



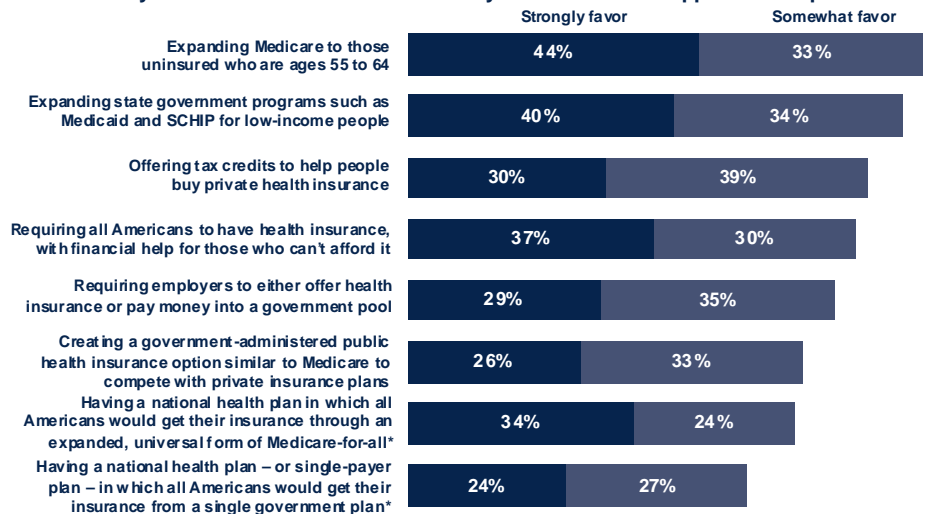
**How will reform affect family, nation?** Twice as many say that the country will be better off than worse off if Congress and the president pass health care reform (51 percent to 23 percent). And while there is no consensus among Americans as to how a health care plan would affect them personally, a plurality of 39 percent continues to think it would leave them better off, compared to 21 percent who expect they would be worse off. Roughly a third (32 percent) don't see health care reform making a difference for them, obviously a critical group for proponents and opponents to sway.

### Support for expansion proposals.

As we also have found in our tracking polls since February, clear majorities support a variety of methods of expanding health insurance coverage, including Medicaid expansion (74 percent), an individual mandate (68 percent), an employer mandate (64 percent) and a public plan (59 percent).

### Support Remains for Many Ways of Expanding Coverage

Now I'm going to read you some different ways to increase the number of Americans covered by health insurance. Please tell me if you would favor or oppose each option.



Items marked with an \* asked of two separate half samples as a wording experiment. Various items based on half samples.











