



Chartpack

The Kaiser Family Foundation

Giving Voice To The People Of New Orleans: The Kaiser Post-Katrina Baseline Survey

May 2007

- **81%** suffered deterioration in their economic well-being, physical or mental health, or family or personal life since Katrina
- **59%** of African Americans in Orleans Parish said their life is still disrupted (compared with **29%** of whites in the parish)
- **55%** of African Americans in Orleans Parish said they are being treated worse than whites in the recovery process
- **Majorities** saw at least some progress on **seven of 10** recovery efforts measured
- Their **top priorities**: levee repairs and crime, followed by health services
- **69%** are optimistic about New Orleans' future, and only **11%** said they plan to leave New Orleans

How The Survey Was Done

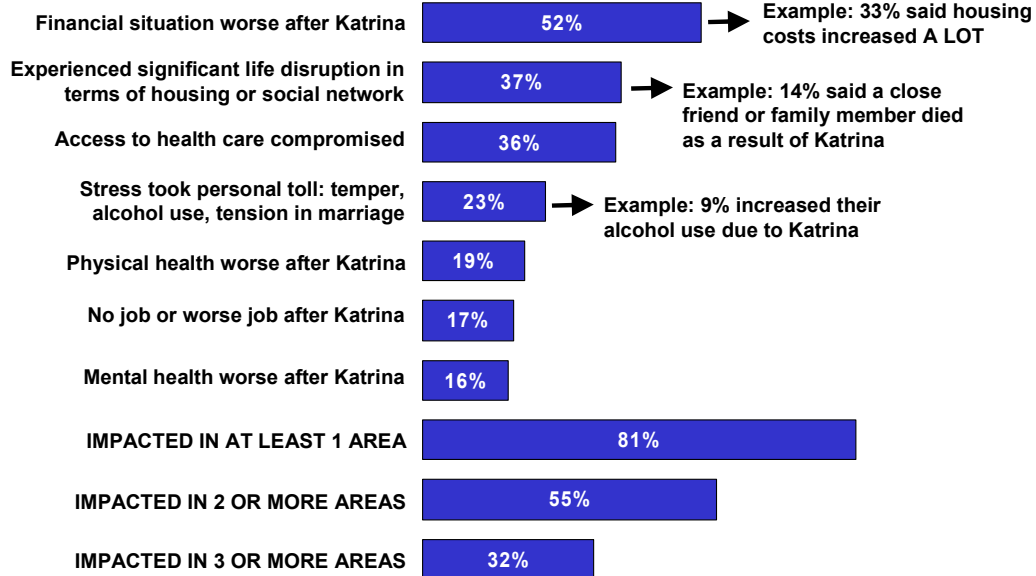
- Designed and analyzed by Kaiser researchers
- Four Parish Area: Orleans, Jefferson, Plaquemines, St. Bernard
- Face-to-face interviews with 1,504 randomly selected adults
- Stratified area probability sample:
 - 456 randomly selected Census-defined areas
 - Visited and documented condition of 17,000 housing locations within those areas
 - Random selection of households and individuals, resulting in 1,504 interviews
 - Oversample in Orleans Parish; results weighted so that total reflects expected population in each parish and neighborhood
 - Interviews in English and Spanish
 - Interviewing Sept. 12 thru Nov. 13, 2006
 - Margin of sampling error +/-4 overall, +/-5 for results based on Orleans or Jefferson Parishes

The Storm: Measuring Personal Impact

Chart 1

Impacts of Hurricane Katrina for Greater New Orleans Residents

Percent who reported having an impact in each of the following areas after Hurricane Katrina:

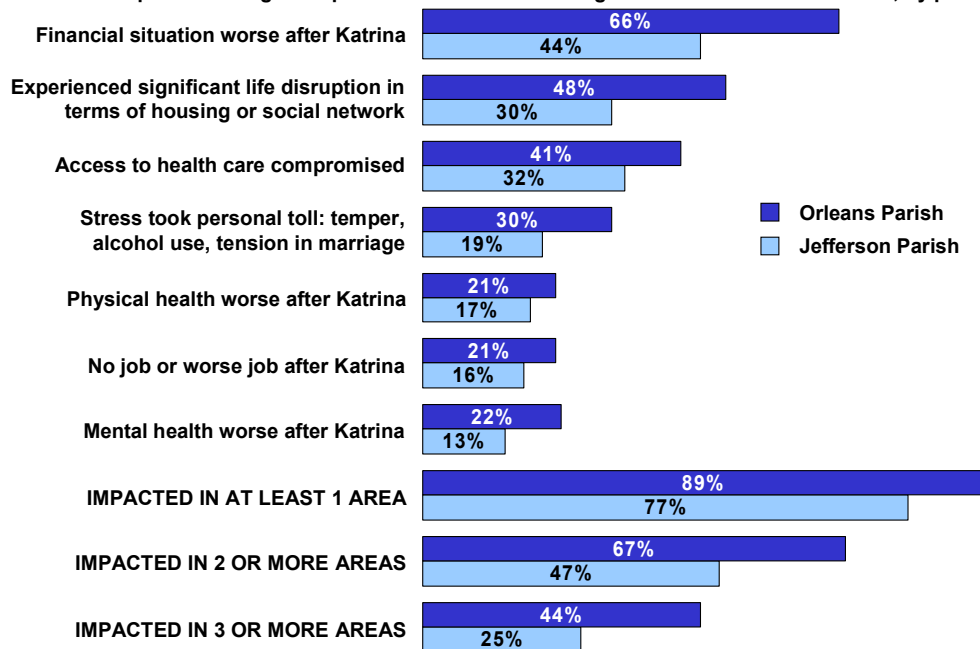


Source: The Kaiser Post-Katrina Baseline Survey of the New Orleans Area (conducted September 12 – November 13, 2006)

Chart 2

Impacts in Orleans and Jefferson Parishes

Percent who reported having an impact in each of the following areas after Hurricane Katrina, by parish:



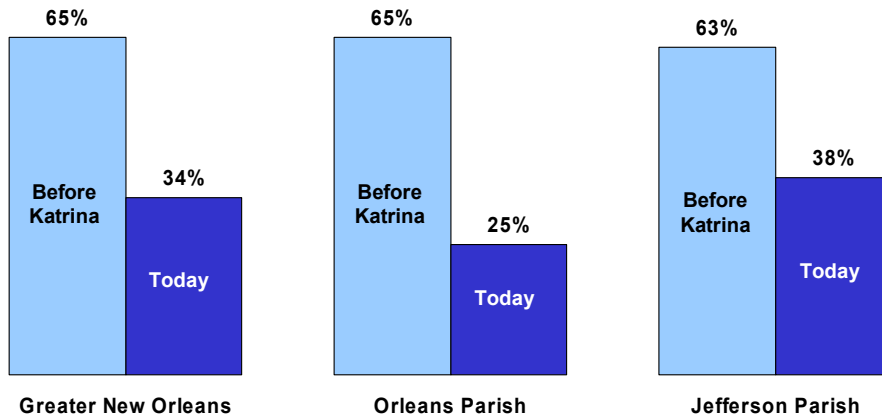
Source: The Kaiser Post-Katrina Baseline Survey of the New Orleans Area (conducted September 12 – November 13, 2006)

Chart 3

Satisfaction With Quality of Life

In general, can you tell me how satisfied or dissatisfied you are with your overall quality of life? And what about before Hurricane Katrina?

Percent "very satisfied" with overall quality of life:



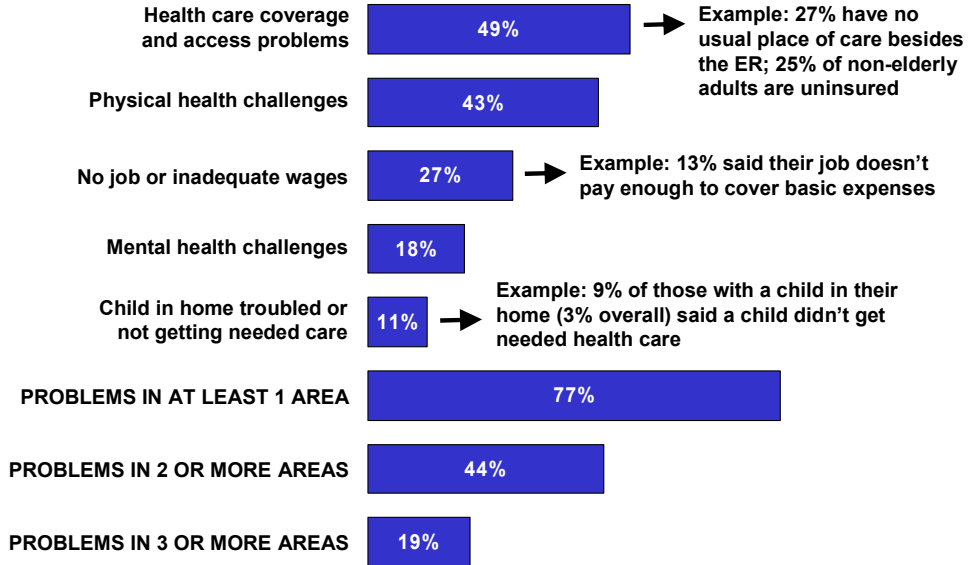
Source: *The Kaiser Post-Katrina Baseline Survey of the New Orleans Area* (conducted September 12 – November 13, 2006)

**State of the Population:
A Portrait of Challenges
Facing Current Residents**

Chart 4

Portrait of Problems Faced by Greater New Orleans Residents

Percent who reported having a problem in each of the following areas:

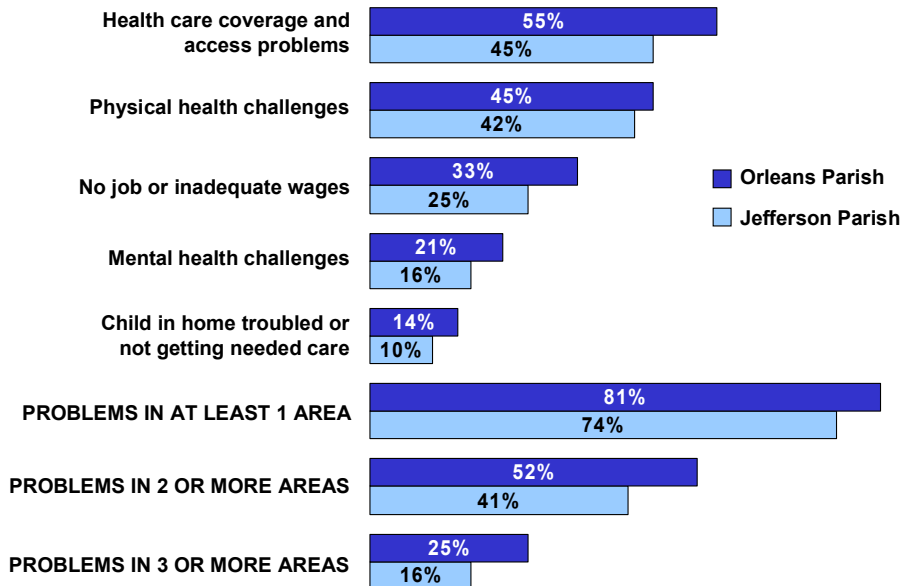


Source: The Kaiser Post-Katrina Baseline Survey of the New Orleans Area (conducted September 12 – November 13, 2006)

Chart 5

Portrait of Problems Faced in Orleans and Jefferson Parishes

Percent who reported having a problem in each of the following areas:



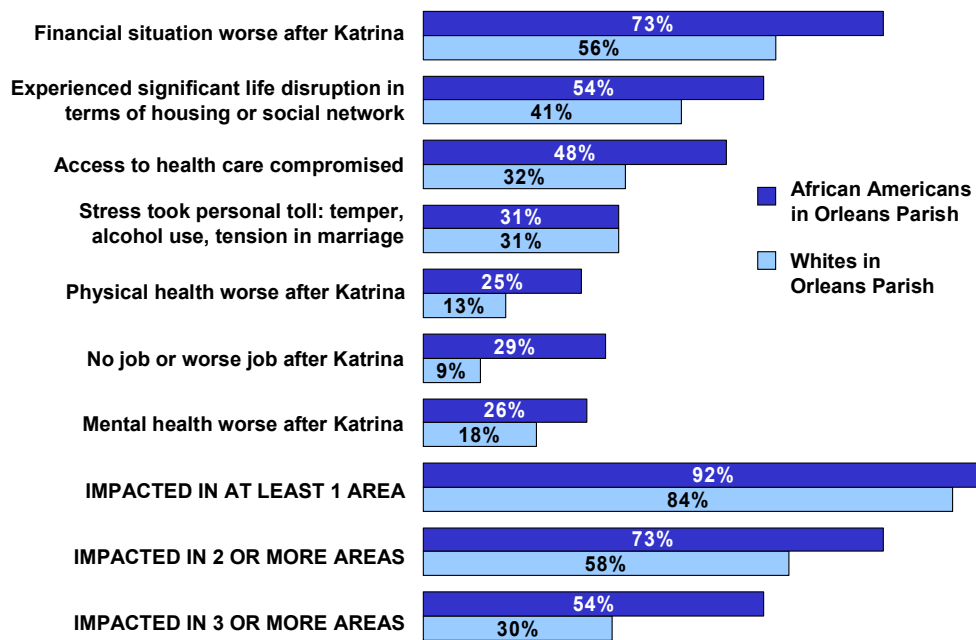
Source: The Kaiser Post-Katrina Baseline Survey of the New Orleans Area (conducted September 12 – November 13, 2006)

A Special Focus on Race in Orleans Parish

Chart 6

Orleans Parish: Impacts for African Americans and Whites

Percent who reported having an impact in each of the following areas after Hurricane Katrina:

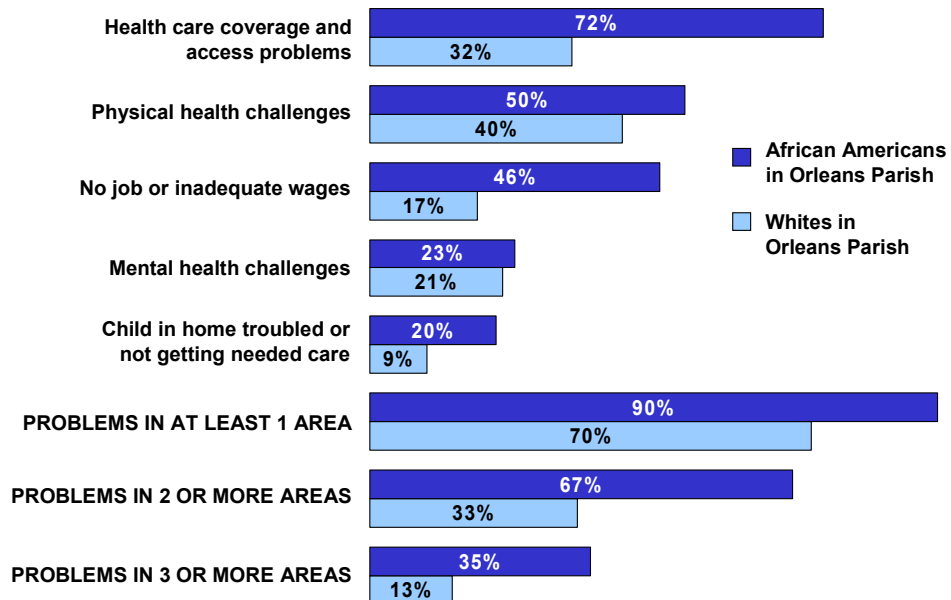


Source: The Kaiser Post-Katrina Baseline Survey of the New Orleans Area (conducted September 12 – November 13, 2006)

Chart 7

Orleans Parish: Portrait of Problems Faced by African Americans and Whites

Percent who reported a problem in each of the following areas:

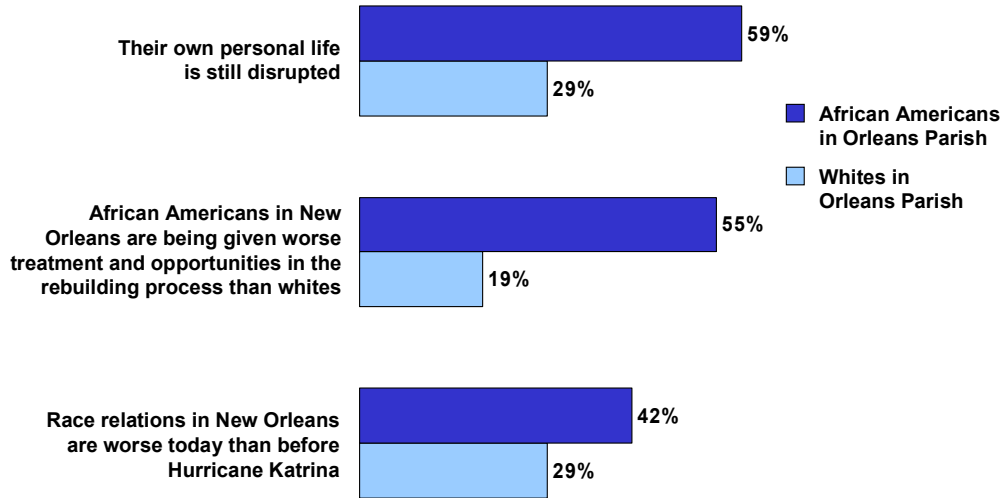


Source: The Kaiser Post-Katrina Baseline Survey of the New Orleans Area (conducted September 12 – November 13, 2006)

Chart 8

Orleans Parish: Views On Life Post-Katrina, Race and Rebuilding

Percent of each group who said:



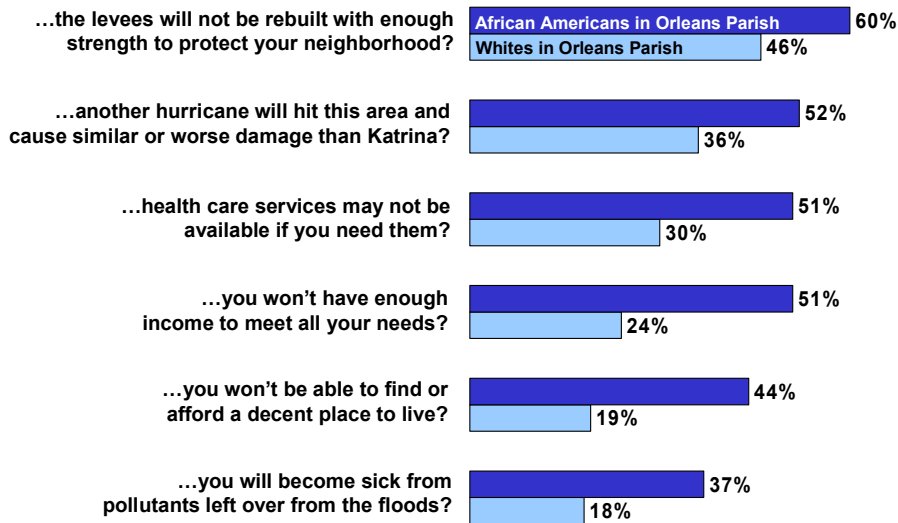
Source: *The Kaiser Post-Katrina Baseline Survey of the New Orleans Area* (conducted September 12 – November 13, 2006)

Chart 9

Orleans Parish: African Americans More Likely to Express Worry

How worried are you that...

Percent "very worried"



Source: *The Kaiser Post-Katrina Baseline Survey of the New Orleans Area* (conducted September 12 – November 13, 2006)

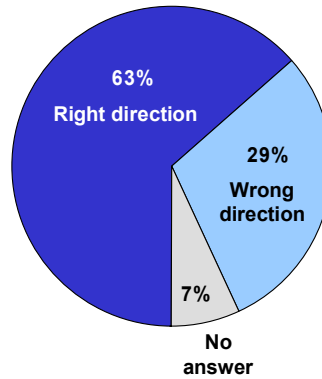
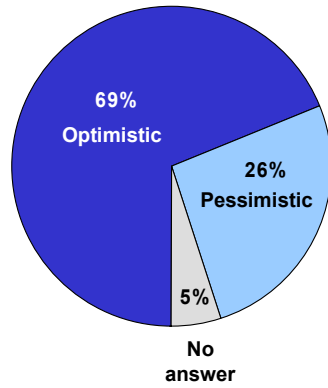
**Priorities, Progress and Worries:
New Orleans Area Residents
Rate the Rebuilding Process**

Chart 10

Optimism Pervasive

Considering everything, are you optimistic or pessimistic about the future of the greater New Orleans area?

Would you say that in general the recovery and rebuilding effort in the greater New Orleans area is going in the right direction or in the wrong direction?

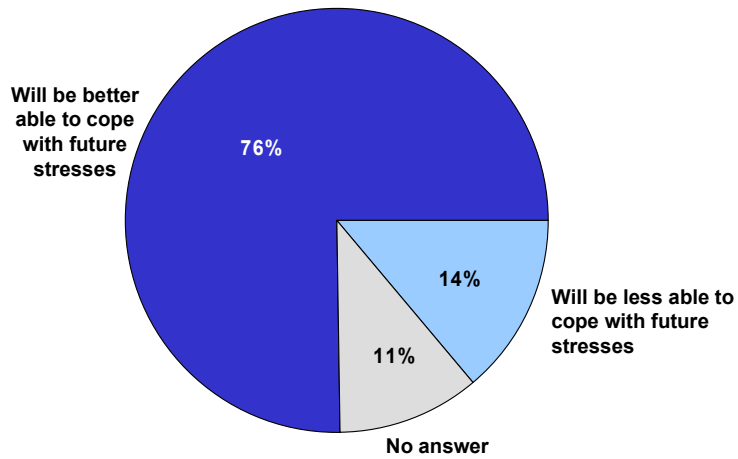


Source: The Kaiser Post-Katrina Baseline Survey of the New Orleans Area (conducted September 12 – November 13, 2006)

Chart 11

Ability to Cope in the Future

Which of these effects do you think your experiences with Hurricane Katrina will have on you over time?

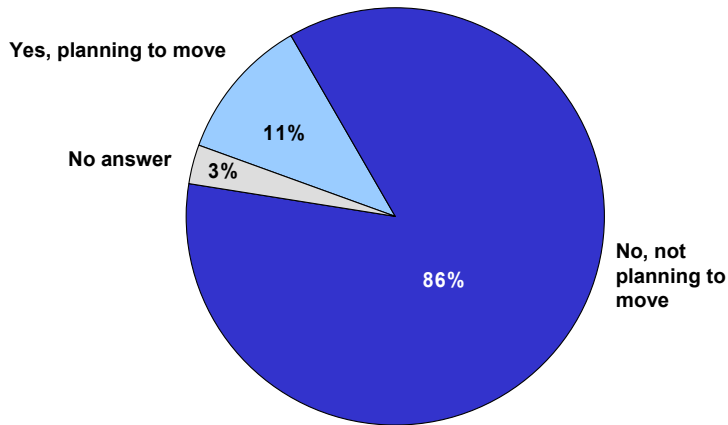


Source: The Kaiser Post-Katrina Baseline Survey of the New Orleans Area (conducted September 12 – November 13, 2006)

Chart 12

Most Planning to Stay, But Some May Still Leave

Are you currently planning to move or seriously considering moving away from the greater New Orleans area, or not?

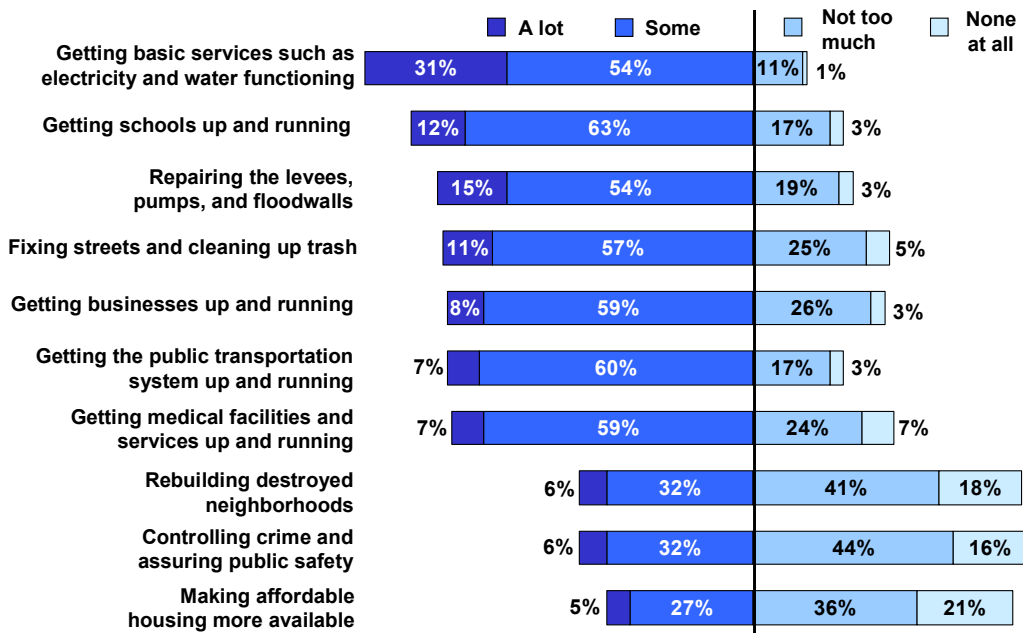


Source: The Kaiser Post-Katrina Baseline Survey of the New Orleans Area (conducted September 12 – November 13, 2006)

Chart 13

Some Progress Seen

How much progress do you think has been made so far in each of the following areas?

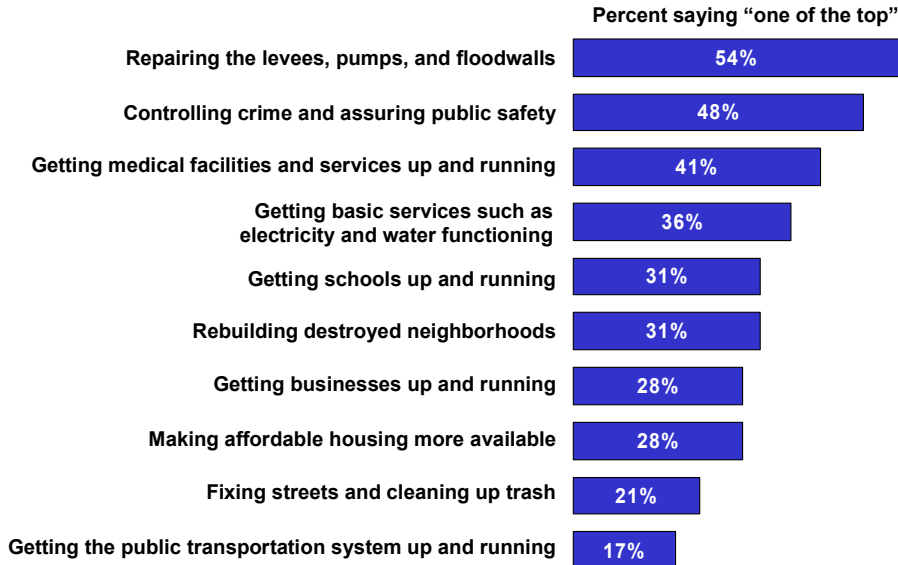


Source: The Kaiser Post-Katrina Baseline Survey of the New Orleans Area (conducted September 12 – November 13, 2006)

Chart 14

Levee Repair and Crime Top Priorities List

Thinking about the rebuilding and recovery efforts in the greater New Orleans area, please tell me how much of a priority each of the following should be:

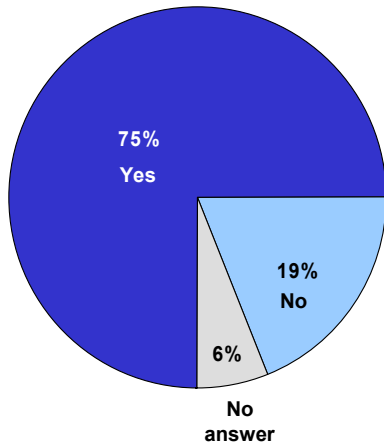


Source: The Kaiser Post-Katrina Baseline Survey of the New Orleans Area (conducted September 12 – November 13, 2006)

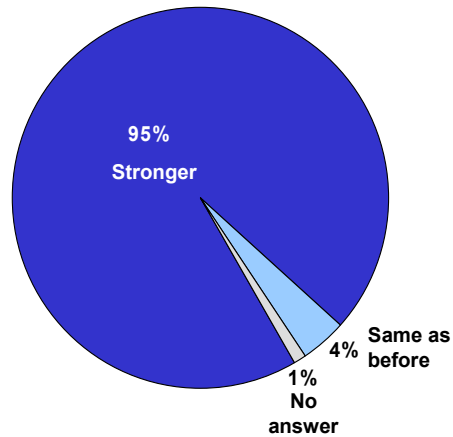
Chart 15

Agreement About Rebuilding and Repairing

Do you think low-lying areas destroyed by the flood should be rebuilt, or not?



Do you think the levees should be rebuilt as they were before Katrina – to withstand a category 3 hurricane – or should they be rebuilt stronger to withstand a category 5 hurricane, even if that will cost substantially more?

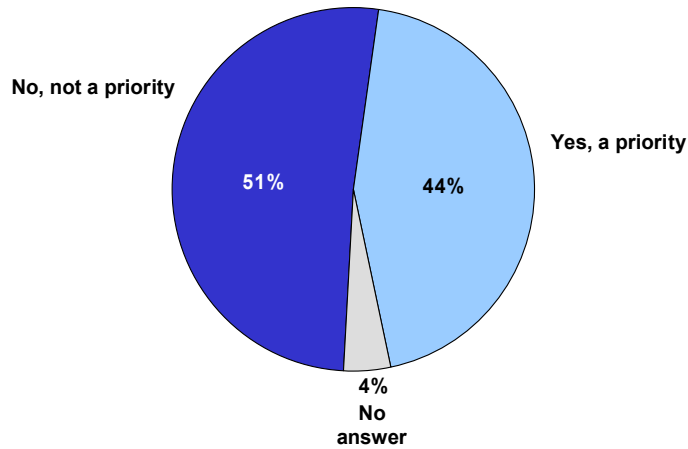


Source: The Kaiser Post-Katrina Baseline Survey of the New Orleans Area (conducted September 12 – November 13, 2006)

Chart 16

Mixed Views on Whether Washington Cares

Do you think the rebuilding of New Orleans is a priority for Congress and the president, or is it not a priority?

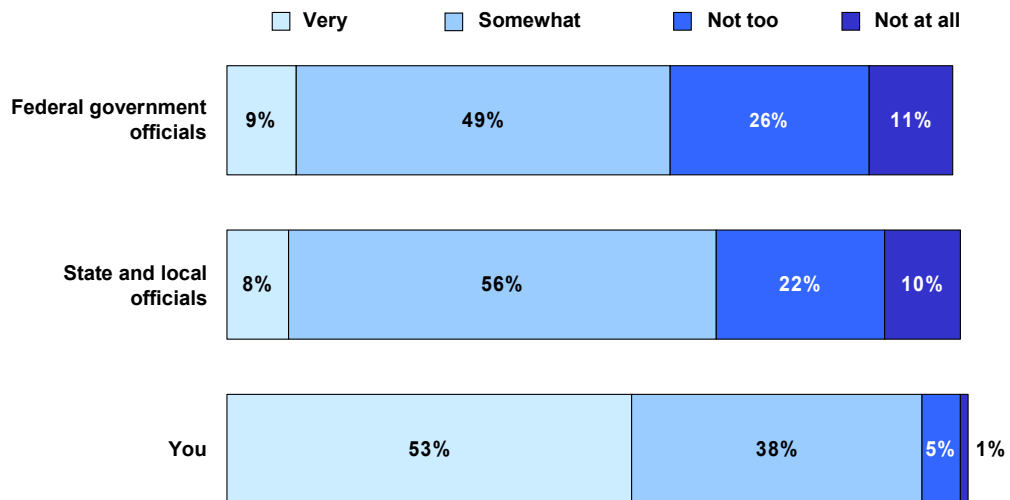


Source: *The Kaiser Post-Katrina Baseline Survey of the New Orleans Area* (conducted September 12 – November 13, 2006)

Chart 17

Preparedness for Future Hurricanes?

Overall, how prepared do you think each of the following are to deal with hurricanes in the future?



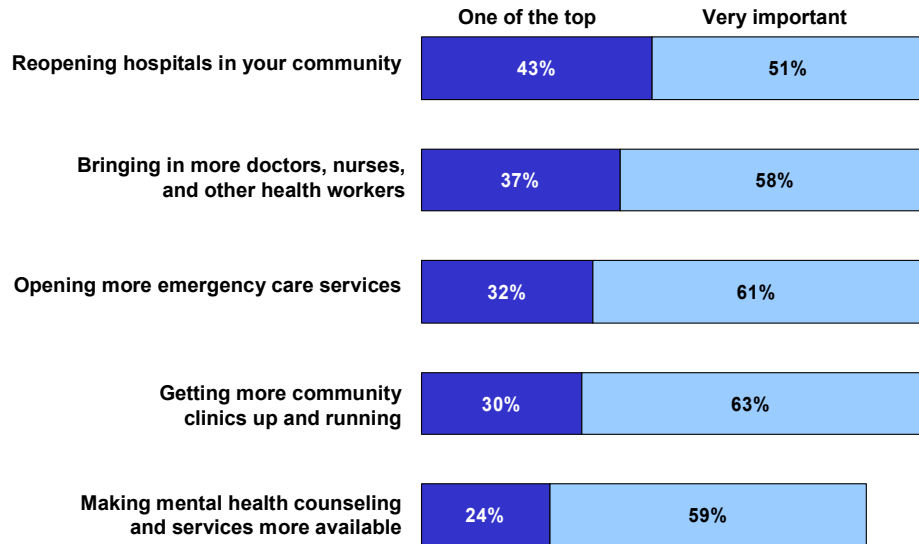
Note: The percentage who did not give an answer is not shown.

Source: *The Kaiser Post-Katrina Baseline Survey of the New Orleans Area* (conducted September 12 – November 13, 2006)

Chart 18

Hospitals and Providers Top Health Priorities

In terms of health issues, please tell me whether you think each of the following should be one of the top priorities for rebuilding New Orleans' health care system, very important, somewhat important, not too important, or not at all important:



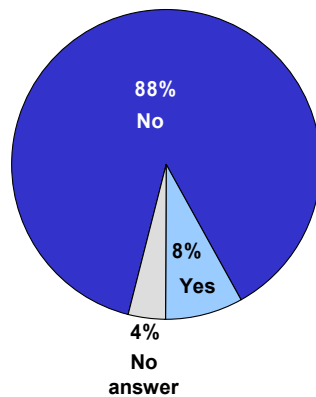
Source: The Kaiser Post-Katrina Baseline Survey of the New Orleans Area (conducted September 12 – November 13, 2006)

Chart 19

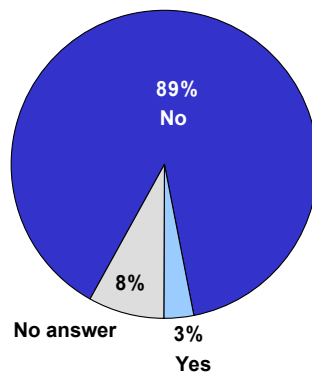
Agreement About Lack of Health Care Providers, Services

Do you think there are enough of the following to take care of the people living in the greater New Orleans area, or not?

Hospitals, clinics and medical facilities currently operating



Health care services currently available for uninsured and low-income people

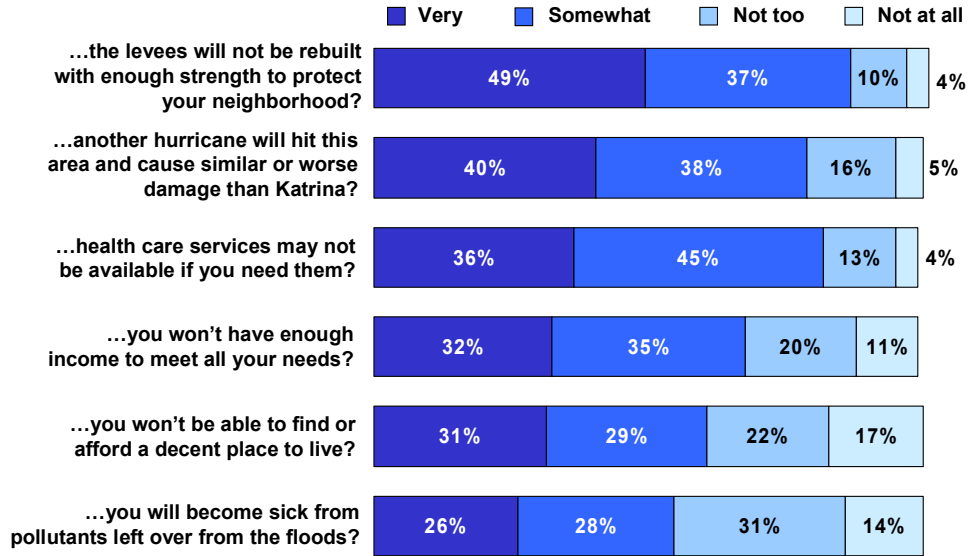


Source: The Kaiser Post-Katrina Baseline Survey of the New Orleans Area (conducted September 12 – November 13, 2006)

Chart 20

Levees, Hurricanes Top Worry List

How worried are you that...



Note: The percentage who did not give an answer is not shown.

Source: *The Kaiser Post-Katrina Baseline Survey of the New Orleans Area* (conducted September 12 – November 13, 2006)

**Appendix:
Detailed Tables on
Impacts and Problems
and Survey Methodology**

Table 1. Specific Areas of Impact from Hurricane Katrina

	Greater New Orleans	Orleans Parish	Jefferson Parish
Physical health worse after Katrina			
Personal health status rated lower now than before	12%	14%	10%
Have chronic condition or disability that is new or has gotten worse since storm	11	11	10
At least one of these	19	21	17
Mental health worse after Katrina			
Mental health status rated lower now than before	15	21	12
Taking medication for mental health issue (Rx is new since storm)	4	4	3
At least one of these	16	22	13
Access to health care compromised			
Meeting health needs rated lower now than before	22	25	18
Harder to get to medical care now than before	18	21	16
Had regular doctor or nurse before storm, do not now	8	12	5
Had regular place to go for care before storm, do not now	5	6	5
Newly uninsured	4	5	4
At least one of these	36	41	32
Financial situation worse after Katrina			
Personal financial situation rated worse now than before	33	40	30
Monthly housing costs increased a lot	33	50	26
Storm-related claim denied and had major impact	9	8	9
At least one of these	52	66	44
No job or a worse job after Katrina			
Newly unemployed	6	7	5
Benefits at job worse than before storm	6	7	6
Current job pays less than previous job	5	9	4
Job now doesn't pay enough to cover basic expenses, pre-storm job did	4	7	4
Job now doesn't offer health insurance, pre-storm job did	3	5	2
At least one of these	17	21	16
Stress took personal toll: temper, alcohol use, tension in marriage			
Harder time controlling temper since Katrina	17	23	13
Increased alcohol use due to Katrina	9	11	8
Katrina-related stress led to verbal or physical conflict in marriage or serious relationship	6	10	4
Katrina-related stress contributed to marriage or serious relationship ending	3	5	2
At least one of these	23	30	19
Experienced major life disruption in terms of housing or social network			
Stayed away from home more than three months	17	25	11
Close friend or family member died as result of Katrina	14	21	10
Owned home before, now renting or staying with friends	6	6	7
Living in new neighborhood, do not feel at home there	5	5	5
Had a local social network before storm, none left	4	7	3
Living in temporary housing	3	3	1
At least one of these	37	48	30

Table 2. Specific Areas of Problems Faced by Residents

	Greater New Orleans	Orleans Parish	Jefferson Parish
Physical health challenges			
Have any chronic condition or disability	41%	42%	40%
Health rated as "fair" or "poor"	13	14	12
<i>At least one of these</i>	43	45	42
Mental health challenges			
Mental health "fair" or "poor"	8	10	8
Taking medication for mental health issue	8	8	8
Score as depressed	6	6	5
Score as PTSD	5	5	4
Diagnosed with serious mental illness	4	5	4
<i>At least one of these</i>	18	21	16
Health care coverage and access problems			
Usual place of care is ER/No usual place of care	27	34	23
Uninsured	20	26	18
Difficult to get to usual place of care	12	15	10
Health needs not being well met	10	11	10
Skipped or postponed care past 6 months	8	9	6
Skipped doses or took less than prescribed Rx in last 6 months	6	6	6
Problems paying medical bills in last 6 months had major financial impact	4	5	4
<i>At least one of these</i>	49	55	45
No job or inadequate wages			
Job doesn't pay enough to cover basic expenses	13	16	12
Unemployed	10	12	8
On disability and can't work	6	6	6
<i>At least one of these</i>	27	33	25
Child in home troubled, ill, or not getting needed care (among those with children in household)			
Child in home with chronic condition or disability	17	21	16
Any child didn't get needed health care in last 6 months	9	17	6
Uninsured child in home	8	11	7
Children's health needs not being met well	6	5	6
Child shows signs of behavioral problems	4	1	5
<i>At least one of these</i>	32	42	28

Table 3. Specific Areas of Impact from Hurricane Katrina for African Americans and Whites in Orleans Parish

	Whites in Orleans Parish	African Americans in Orleans Parish
Physical health worse after Katrina		
Personal health status rated lower now than before	8%	19%
Have chronic condition or disability that is new or has gotten worse since storm	9	12
At least one of these	13	25
Mental health worse after Katrina		
Mental health status rated lower now than before	17	25
Taking medication for mental health issue (Rx is new since storm)	5	3
At least one of these	18	26
Access to health care compromised		
Meeting health needs rated lower now than before	22	29
Harder to get to medical care now than before	13	26
Had regular doctor or nurse before storm, do not now	5	17
Had regular place to go for care before storm, do not now	3	9
Newly uninsured	2	7
At least one of these	32	48
Financial situation worse after Katrina		
Personal financial situation rated worse now than before	32	47
Monthly housing costs increased a lot	42	56
Storm-related claim denied and had major impact	5	11
At least one of these	56	73
No job or a worse job after Katrina		
Newly unemployed	2	11
Benefits at job worse than before storm	3	10
Current job pays less than previous job	4	12
Job now doesn't pay enough to cover basic expenses, pre-storm job did	3	10
Job now doesn't offer health insurance, pre-storm job did	2	7
At least one of these	9	29
Stress took personal toll: temper, alcohol use, tension in marriage		
Harder time controlling temper since Katrina	22	24
Increased alcohol use due to Katrina	14	11
Katrina-related stress led to verbal or physical conflict in marriage or serious relationship	8	12
Katrina-related stress contributed to marriage or serious relationship ending	4	6
At least one of these	31	31
Experienced major life disruption in terms of housing or social network		
Stayed away from home more than three months	20	29
Close friend or family member died as result of Katrina	15	28
Owned home before, now renting or staying with friends	9	4
Living in new neighborhood, do not feel at home there	3	6
Had a local social network before storm, none left	4	10
Living in temporary housing	1	4
At least one of these	41	54

Table 4. Specific Areas of Problems Faced by African Americans and Whites in Orleans Parish

	Whites in Orleans Parish	African Americans in Orleans Parish
Physical health challenges		
Have any chronic condition or disability	39%	44%
Health rated as "fair" or "poor"	10	19
At least one of these	40	50
Mental health challenges		
Mental health "fair" or "poor"	7	14
Taking medication for mental health issue	10	8
Score as depressed	5	7
Score as PTSD	5	7
Diagnosed with serious mental illness	4	6
At least one of these	21	23
Health care coverage and access problems		
Usual place of care is ER/No usual place of care	15	47
Uninsured	12	33
Difficult to get to usual place of care	5	26
Health needs not being well met	6	15
Skipped or postponed care past 6 months	9	11
Skipped doses or took less than prescribed Rx in last 6 months	4	8
Problems paying medical bills in last 6 months had major financial impact	3	7
At least one of these	32	72
No job or inadequate wages		
Job doesn't pay enough to cover basic expenses	8	20
Unemployed	5	16
On disability and can't work	3	9
At least one of these	17	46
Child in home troubled, ill, or not getting needed care (among all adults)		
Child in home with chronic condition or disability	5	9
Any child didn't get needed health care in last 6 months	2	9
Uninsured child in home	2	6
Children's health needs not being met well	<1	3
Child shows signs of behavioral problems	1	<1
At least one of these	9	20

Survey Methodology

The *Kaiser Post-Katrina Baseline Survey of the New Orleans Area* was designed and analyzed by researchers at the Kaiser Family Foundation. This in-person survey was conducted door-to-door from September 12 to November 13, 2006. Interviews were completed in English and Spanish among 1,504 randomly selected adults ages 18 and older residing in Orleans, Jefferson, Plaquemines, and St. Bernard parishes. These four neighboring parishes make up Region 1 as defined by Louisiana's Department of Health and Hospitals, an administrative region used for recovery planning, and are referred to as the Greater New Orleans area throughout this report.

The sample design was a stratified area probability sample, with 456 sampling points distributed proportionate to expected population size in each of the 4 parishes, and in each of 14 Census tract defined neighborhoods in Orleans Parish (New Orleans proper). An oversample was drawn in Orleans to allow for more reliable estimates at the neighborhood level in that parish. The final results have been weighted so that Orleans Parish reflects its estimated share of the population in the four-parish area.

The table below shows the number of respondents and margin of sampling error for the total sample and for key subgroups (note that the number of respondents in Plaquemines and St. Bernard are too small to allow for separate reporting; responses for these parishes are included in the total). For results based on other subsets of respondents the margin of sampling error may be higher.

	Number of respondents	Margin of sampling error (accounting for design effect)
Total New Orleans Area	1504	±4
Orleans Parish	901	±5
Jefferson Parish	569	±5
African Americans in Orleans	478	±6
Whites in Orleans	354	±6

ICR/International Communications Research collaborated with Kaiser researchers on sample design and weighting, and supervised the fieldwork using a team of 41 trained interviewers. Dr. Karen DeSalvo and her colleagues at the Tulane University School of Medicine provided helpful guidance and feedback throughout this project. In addition, the questionnaire was reviewed by Tulane's Committee on the Use of Human Subjects. Dr. Ben Springgate of the University of California, Los Angeles also provided helpful guidance throughout the project. Interviewers carried a letter of introduction to the study from Dr. Fred Cerise, Secretary of the Louisiana Department of Health and Hospitals.



Additional copies of this publication (#7632) are available on the Kaiser Family Foundation's website at www.kff.org.

The Kaiser Family Foundation is a non-profit, private operating foundation dedicated to providing information and analysis on health care issues to policymakers, the media, the health care community and the general public. The Foundation is not associated with Kaiser Permanente or Kaiser Industries.

The Henry J. Kaiser Family Foundation
Headquarters
2400 Sand Hill Road
Menlo Park, CA 94025
Phone: 650.854.9400
Fax: 650.854.4800

Washington Offices and
Barbara Jordan Conference Center
1330 G Street N.W.
Washington, DC 20005
Phone: 202.347.5270
Fax: 202.347.5274