

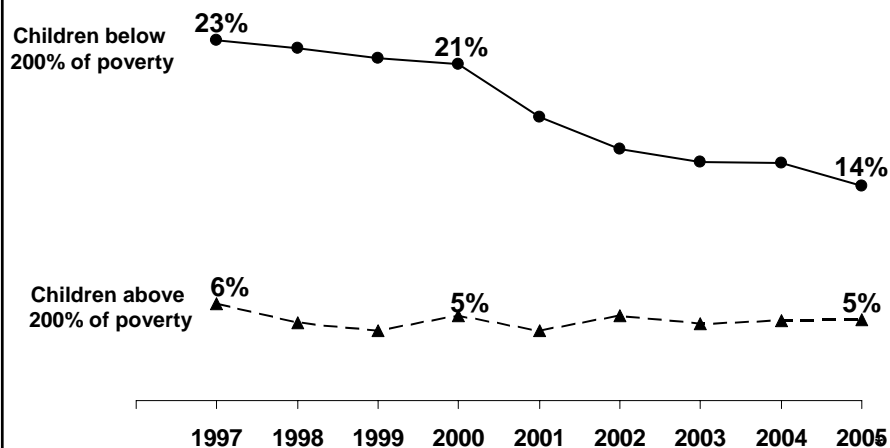
Resuming the Path to Health Coverage for Children and Parents

Presented by:
Donna Cohen Ross
Center on Budget and Policy Priorities
For KCMU Press Briefing
Tuesday, January 9, 2007

K A I S E R C O M M I S S I O N O N
Medicaid and the Uninsured

Figure 1

Percentage of Children Without Health Insurance, By Poverty Level, 1997-2005

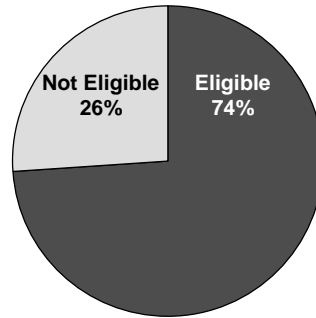


Source: L. Ku, "Medicaid: Improving Health, Saving Lives," Center on Budget and Policy Priorities analysis of National Health Interview Survey data, August 2005.

K A I S E R C O M M I S S I O N O N
Medicaid and the Uninsured

Figure 2

Distribution of Uninsured Children by Eligibility for Medicaid/SCHIP, 2004



SOURCE: Urban Institute analysis of 2005 CPS for KCMU.

K A I S E R C O M M I S S I O N O N
M e d i c a i d a n d t h e U n i n s u r e d

Figure 3

Major Findings

6th Annual Survey of State Policies and Procedures in Medicaid and SCHIP

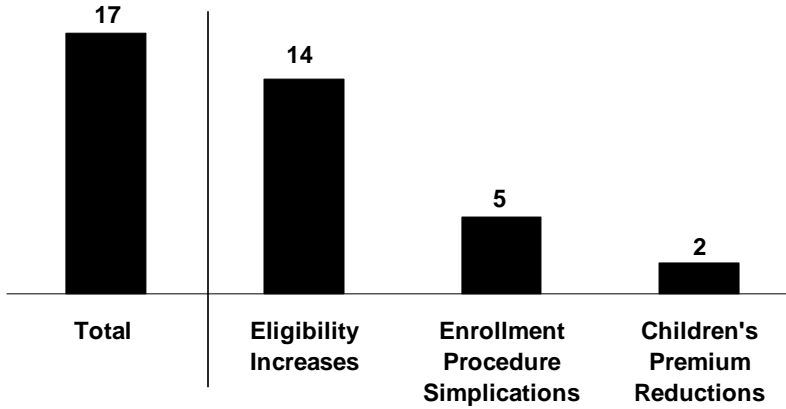
Between July 2005 and July 2006:

- **States showed renewed enthusiasm for covering the uninsured, especially children.**
 - Some have major initiatives to cover children.
 - Most retained or advanced efforts to facilitate enrollment.
 - Eligibility for low-income parents still lags behind.
- **However, a new federal law complicates state efforts to simplify enrollment and renewal procedures.**
 - U.S. citizens are now required to document citizenship and identity when they apply for or renew Medicaid.
 - Enrollment declines seen in some states.

K A I S E R C O M M I S S I O N O N
M e d i c a i d a n d t h e U n i n s u r e d

Figure 4

One-Third of States Expanded Access to Medicaid and SCHIP, July 2005-2006

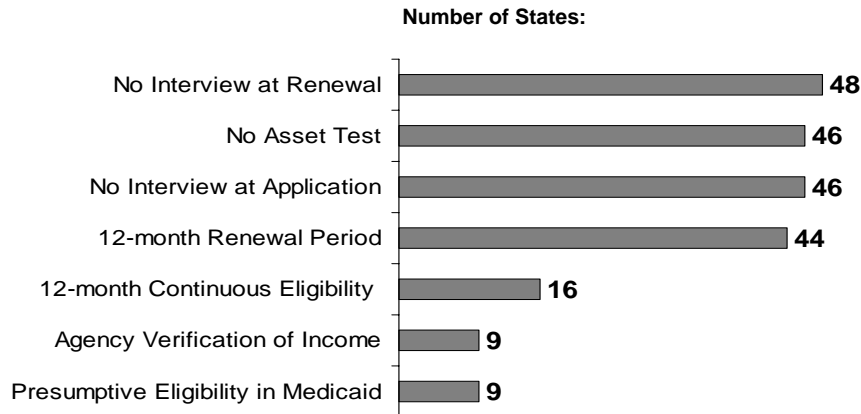


NOTE: Past survey results indicate not all adopted actions are implemented.
SOURCE: KCMU survey of Medicaid officials in 50 states and DC conducted by Health Management Associates, October 2006.

K A I S E R C O M M I S S I O N O N
M e d i c a i d a n d t h e U n i n s u r e d

Figure 5

Simplifying Enrollment and Renewal: Strategies States are Using in Children's Health Coverage Programs, July 2006

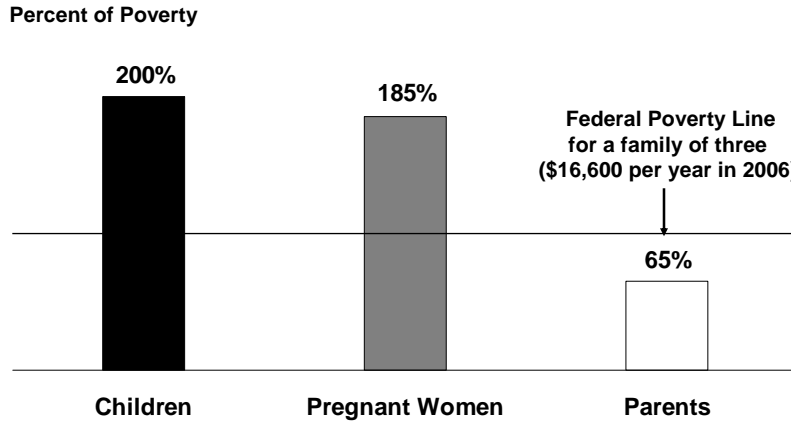


SOURCE: Based on a national survey conducted by the Center on Budget and Policy Priorities for KCMU, 2006.

K A I S E R C O M M I S S I O N O N
M e d i c a i d a n d t h e U n i n s u r e d

Figure 6

Median Medicaid/SCHIP Income Eligibility Threshold for Children, Pregnant Women, and Working Parents, July 2006

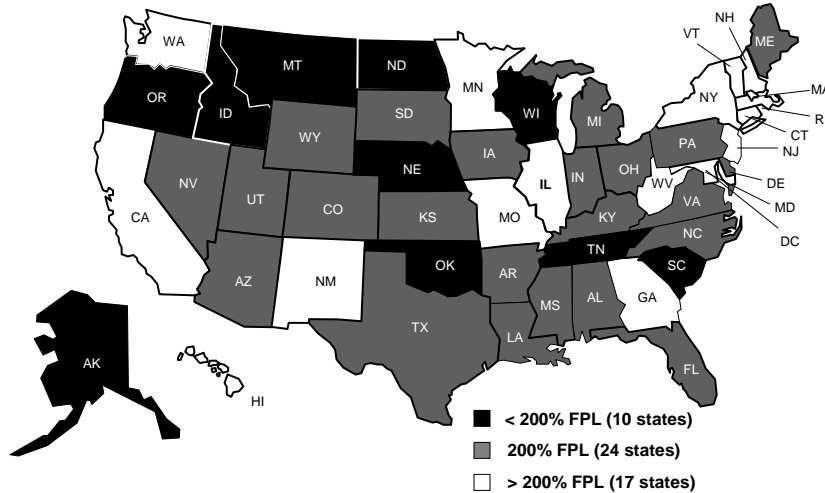


Note: Eligibility levels for parents based on the income threshold applied to a working parent in a family of three.
SOURCE: Based on a national survey conducted by the Center on Budget and Policy Priorities for KCMU, 2006.

KAISER COMMISSION ON Medicaid and the Uninsured

Figure 7

Children's Eligibility for Medicaid/SCHIP by Income, July 2006

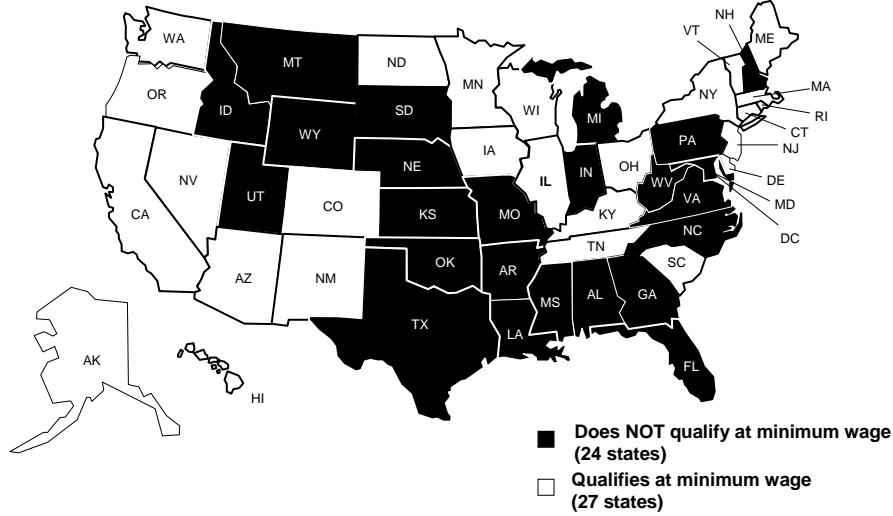


*The Federal Poverty Line (FPL) for a family of three in 2006 is \$16,600 per year.
SOURCE: Based on a national survey conducted by the Center on Budget and Policy Priorities for KCMU, 2006.

KAISER COMMISSION ON Medicaid and the Uninsured

Figure 8

Medicaid Eligibility for Working Parents by Federal Minimum Wage, July 2006



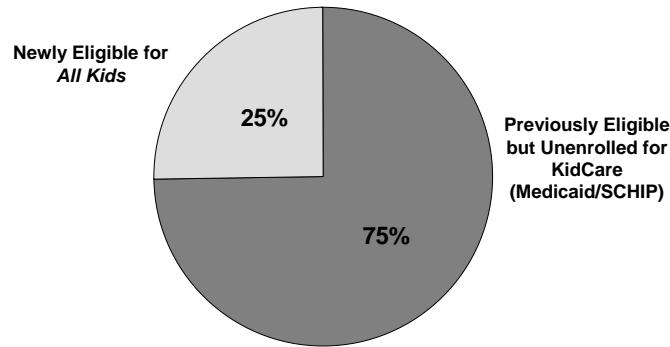
*A parent in a family of three working full time at federal minimum wage earns \$893 per month

SOURCE: Based on a national survey conducted by the Center on Budget and Policy Priorities for KCMU, 2006.

KAISER COMMISSION ON Medicaid and the Uninsured

Figure 9

Increase in Children's Enrollment with Implementation of Illinois' All Kids



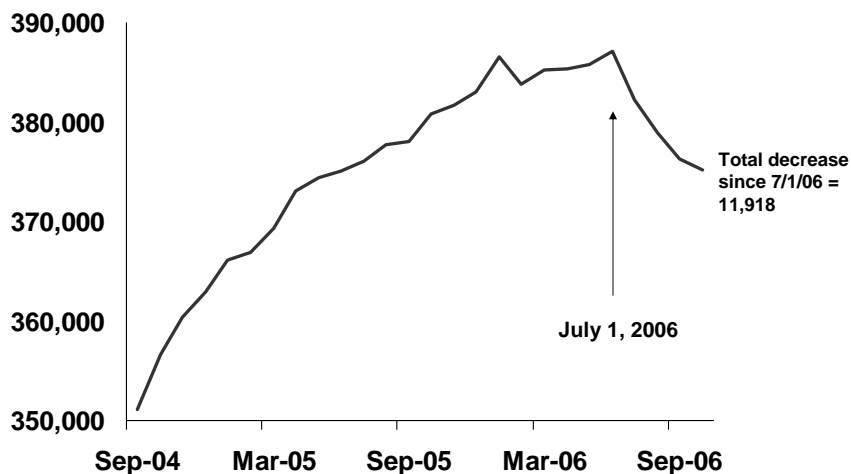
Increase in Total Enrollment
November 2005 – November 2006:
94,703

SOURCE: Illinois Department of Healthcare and Family Services

KAISER COMMISSION ON Medicaid and the Uninsured

Figure 10

Monthly Net Enrollment of Children in Virginia's FAMIS Plus (Medicaid)



SOURCE: Virginia Department of Medical Assistance Services

K A I S E R C O M M I S S I O N O N
M e d i c a i d a n d t h e U n i n s u r e d

Figure 11

Conclusions

- **With a brighter fiscal outlook, many states are building on Medicaid/SCHIP to reduce the number of uninsured, especially children.**
- **Federal policy on funding and simplification will affect states' progress on children's health coverage:**
 - Sufficient federal SCHIP funding will determine whether currently enrolled children maintain coverage and whether additional children can be covered.
 - Since most children with public coverage are covered by Medicaid, sustaining coverage through that program is key.
 - Continued efforts to design simple and efficient enrollment systems that are family-friendly are pivotal to further progress.

K A I S E R C O M M I S S I O N O N
M e d i c a i d a n d t h e U n i n s u r e d